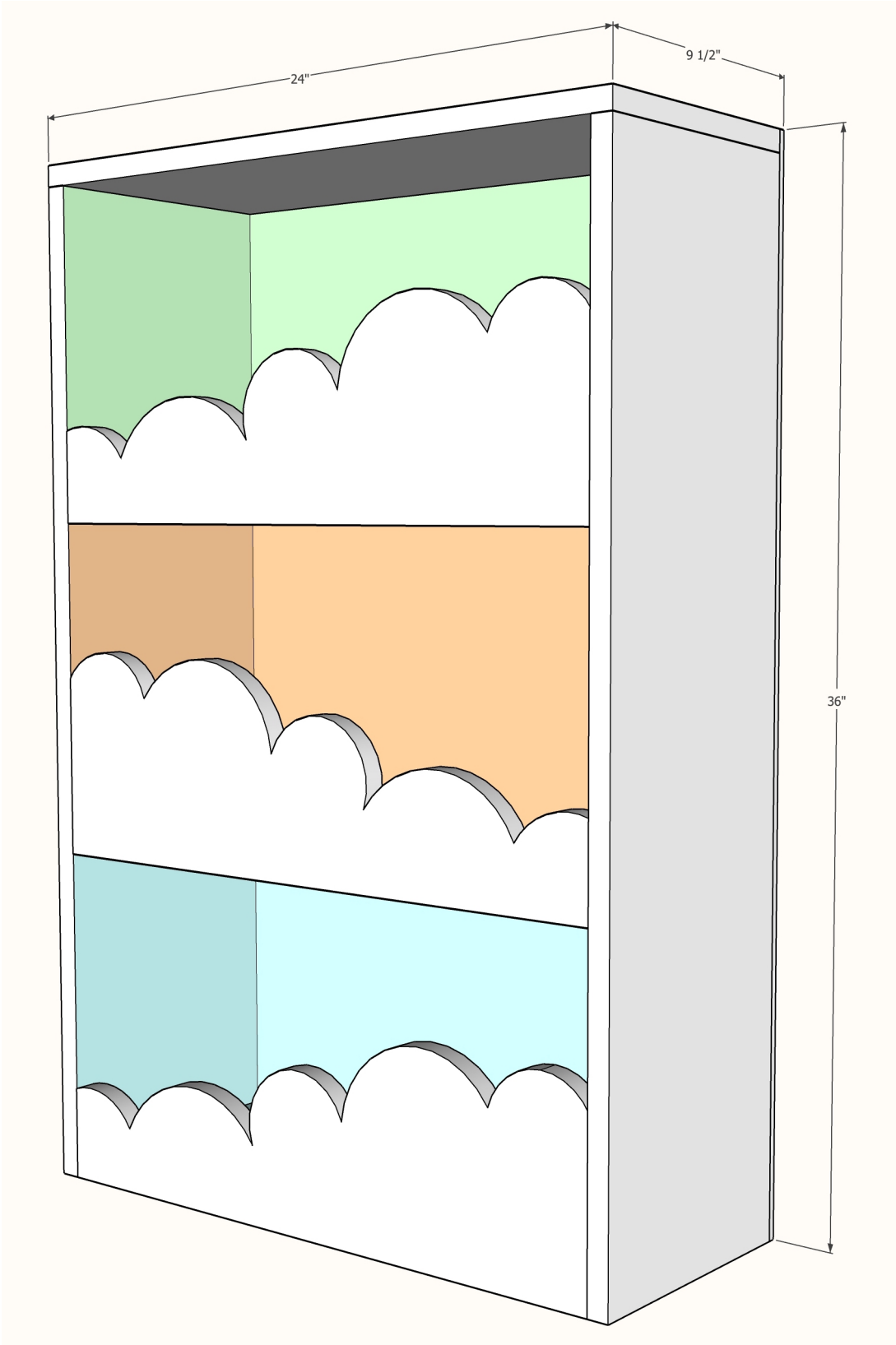


**CLOUD BOOKSHELF**



## **MATERIALS:**

- (1) 1 x 10 x 8 Ft. Board
- (1) 1 x 10 x 6 Ft. Board
- (1) 1 x 8 x 6 Ft. Board
- (1) 2 x 4 Ft. Sheet of ¼-inch Plywood

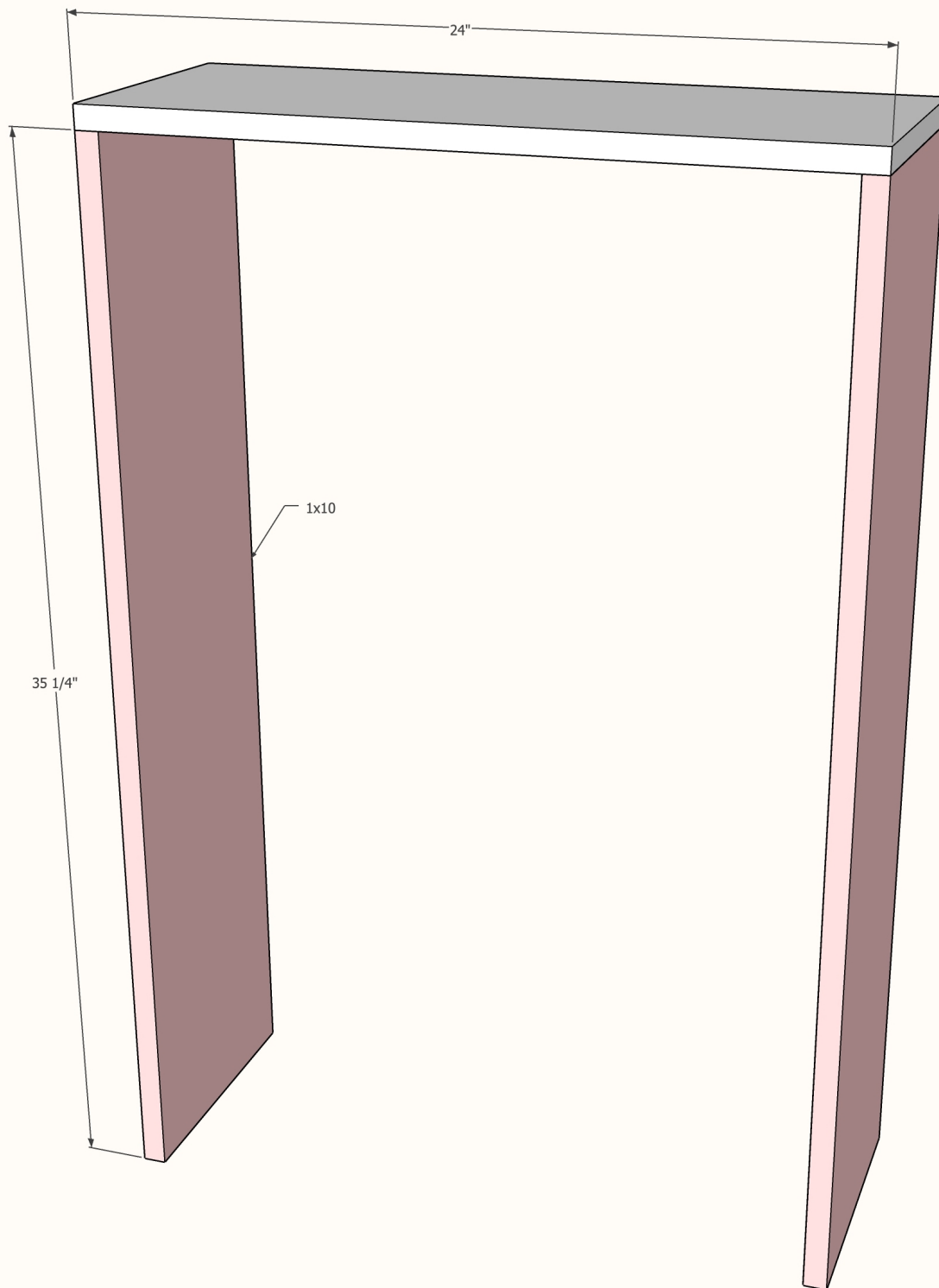
*\*This plan assumes the boards are a nominal width, not actual width. Generally, a 1x10 board actually measures 9 ¼ inches wide and a 1x8 board measures 7 ¼ inches wide. You can also use ¾-inch plywood if you'd prefer.*

## **TOOLS:**

- Tape Measure
- Pencil
- Carpenter's Square
- Cordless Drill/Driver
- Circular Saw
- Jigsaw
- Pocket Hole Jig
- Brad Nailer or Hammer
- Stapler
- Safety Glasses
- Hearing Protection
- Dust Mask

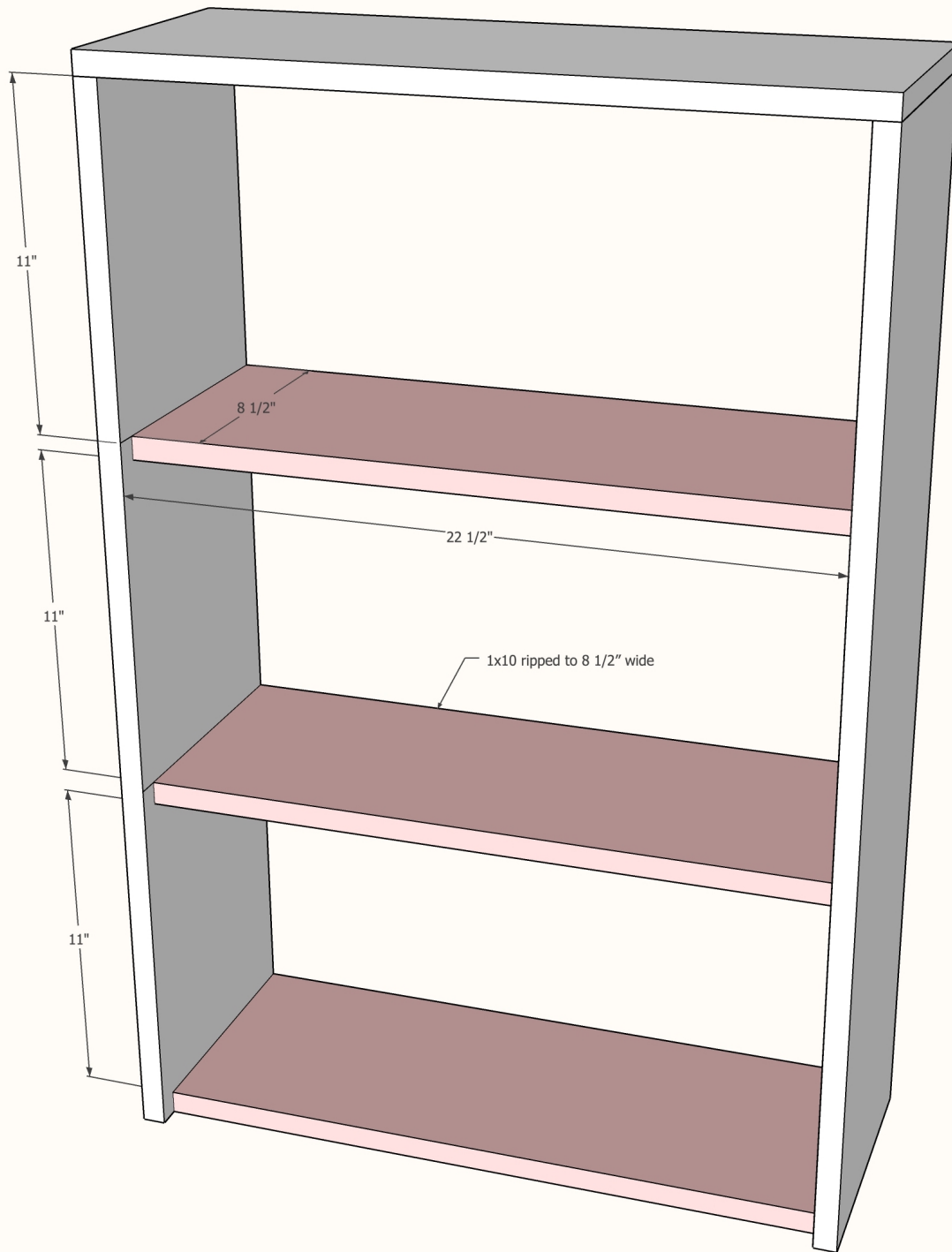
## **CUT LIST:**

- (2) 1x10 @ 35 ¼ inches (sides)
- (1) 1x10 @ 24 inches (top)
- (3) 1x10 @ 22 ½ inches (shelves and bottom)
- (3) 1x8 @ 22 ½ inches (cloud fronts)
- (1) ¾-inch plywood @ 36 inches x 24 inches (back panel)



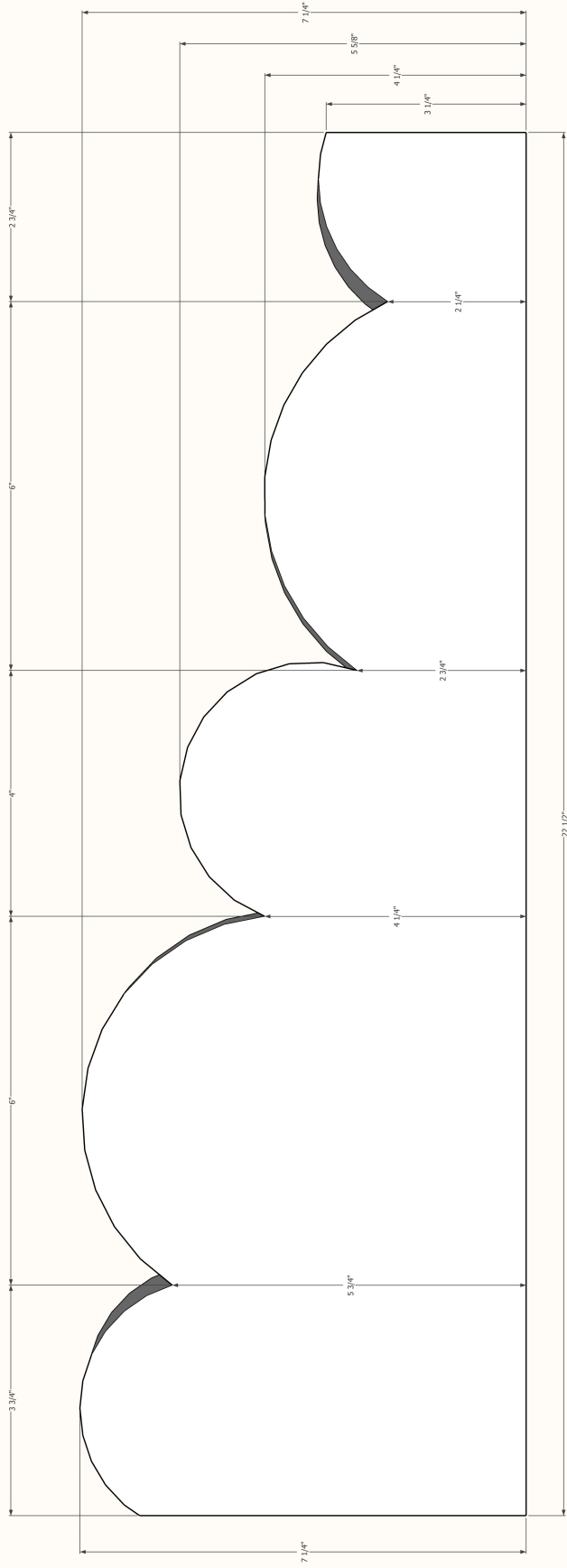
**STEP 1 – CUT AND ATTACH THE TOP AND SIDES**

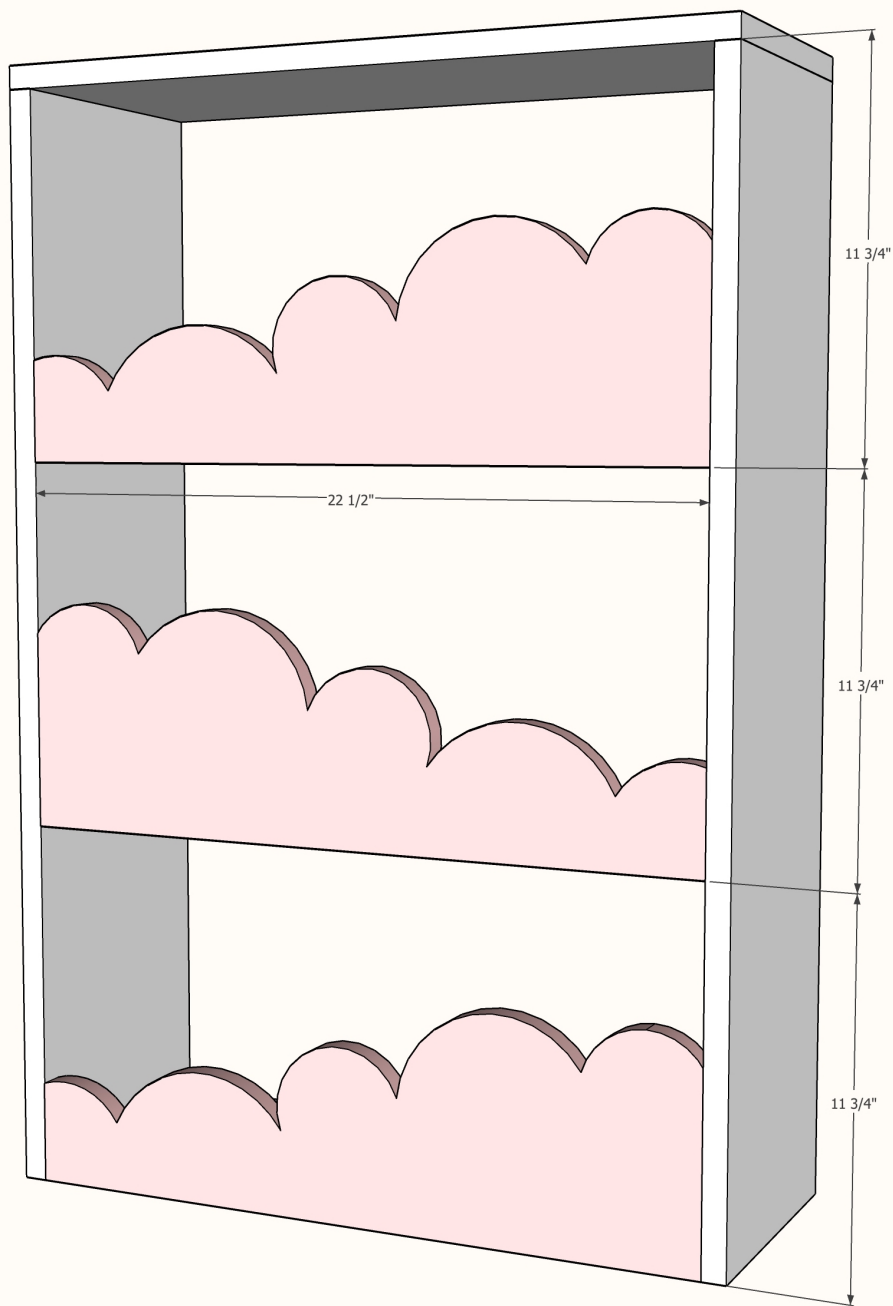
Measure, mark, and cut top and sides to length. Drill  $\frac{3}{4}$ -inch pocket holes into the top ends of the sides. Attach the sides to the top with  $1\frac{1}{4}$ -inch pocket screws and wood glue.



## **STEP 2 - ADD THE SHELVES**

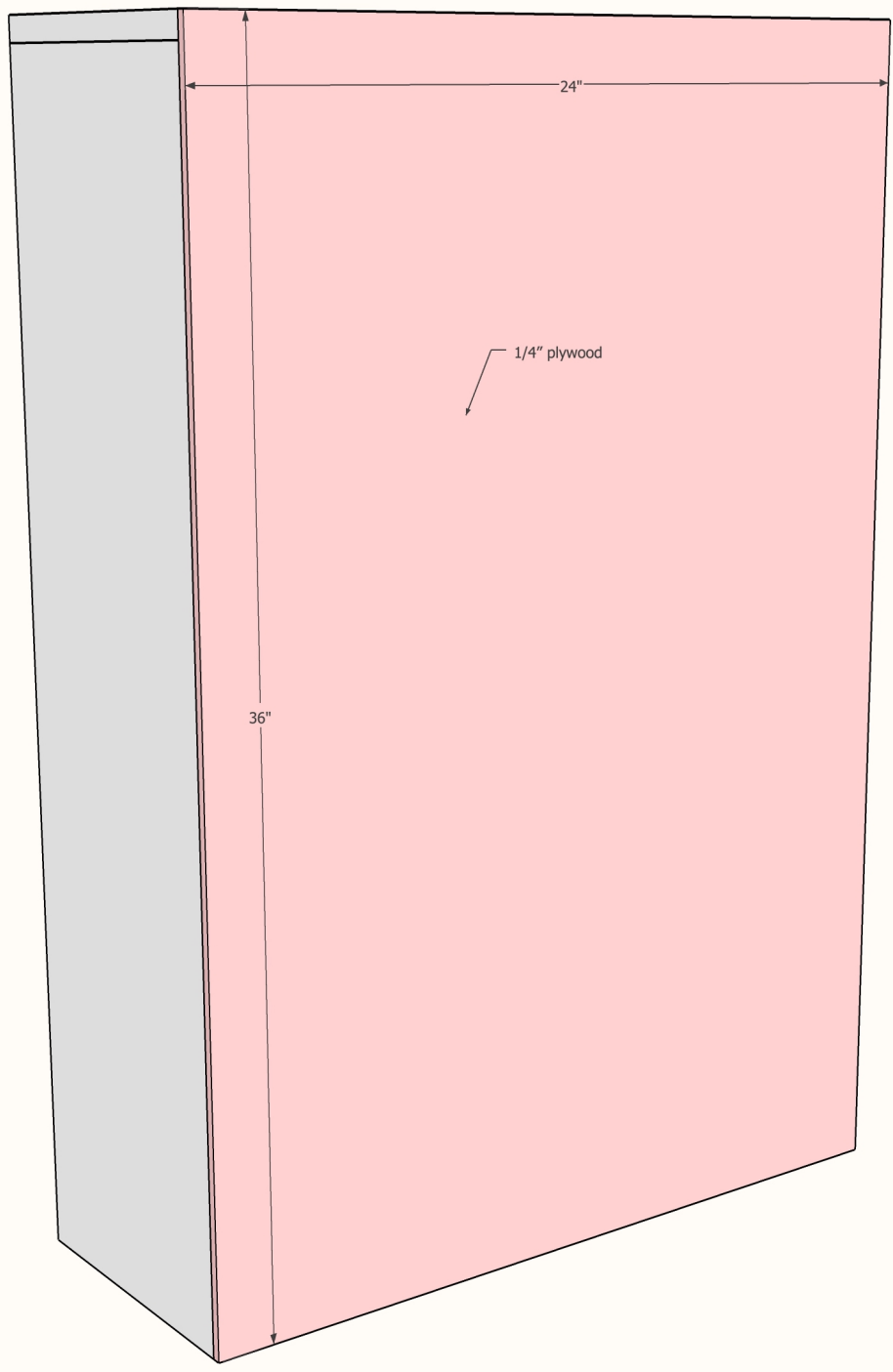
Using a table saw, rip the 6-foot 1x10 board to 8 ½ inches wide. Cut the boards to length. Drill ¼-inch pocket holes into the ends and attach the shelves to the sides with 1 ¼-inch pocket screws and wood glue. Notice the shelves are attached flush to the back to allow space on the front for the cloud fronts.





### **STEP 3 – CUT AND ATTACH THE CLOUD FRONTS**

Use a round pot or bucket as a guide and trace the curve onto the boards. Don't worry about perfection here – clouds are organic and whimsical! Use a jigsaw to cut the cloud shape out. Attach the cloud fronts with 1 ¼-inch brad nails and wood glue.



**STEP 4 – ATTACH THE BACK PANEL**

Measure, mark, and cut ¼-inch plywood to size. Attach it to the bookshelf with 1-inch staples and wood glue.

Sand, stain and/or paint, and finish as desired.